



# **Arlink 7000 Workstation**

## **Instructions for Assembly**

Basic Bench Assembly  
Undersurface Accessories  
Above Surface Accessories

Making Workspace Work® is a trademark of Lista International Corporation.

Creation Date	Document Number	Rev	Description
Jun/19/13	AS70007	K	Arlink 7000 Workstation

This manual is proprietary information of Lista International Corporation. Unauthorized reproduction of any portion of the manual is prohibited without consent of Lista International Corporation. The material in this manual is for informational purposes only. It is subject to change without notice. Lista International Corporation assumes no responsibility for any typographical errors contained in the manual.

© 2013 by Lista International Corporation, all rights reserved.  
106 Lowland Street  
Holliston, MA 01746-2094  
E-mail: sales@listaintl.com

All rights reserved.

For questions or technical support, call 1-800-722-3020  
ISO 9001 Certified

# Table of Contents

Basic Bench Assembly Step 1 .....	3
Basic Bench Assembly Step 2 .....	3
Basic Bench Assembly Step 3 .....	3
Basic Bench Assembly Step 4 .....	3
Back & End Stops.....	4
Rear & End Modesty Panels.....	4
Footrest .....	4
Tote Box .....	4
Drawer .....	5
Riser Shelf—Box Style .....	6
ESD Grounding .....	6

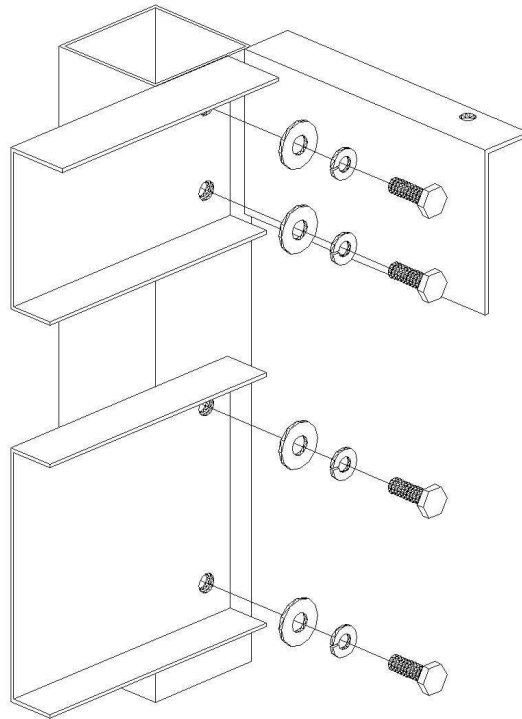
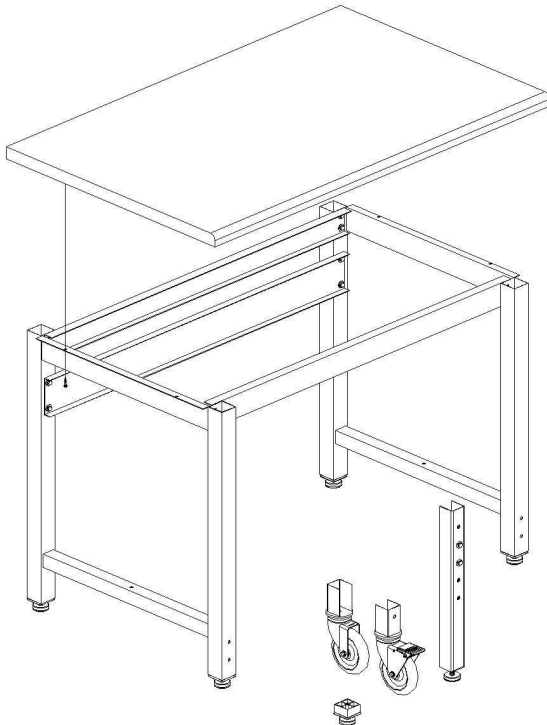
# SERIES 7000

## Assembly Instructions

### Basic Bench Assembly

#### Step 1

Install the standard 2"x2" Black threaded insert into the leg tube along with the leveling glide. If you have purchased leg extenders or casters they mount into the leg tubes using the 1/4"-20 x 3/4" hex bolt, washers and lock washers provided.



#### Step 2

Assemble frame by attaching load beams and stiffener to legs using the 1/4"-20 x 3/4" hex bolts 1/4" flat washers and 1/4" lock washers included. Leave bolts loose until all are in place, then square up the frame and tighten bolts. **Note: One flange on each load beam has holes used to secure the worksurface. Ensure the holes are at the top of the frame.**

#### Step 3

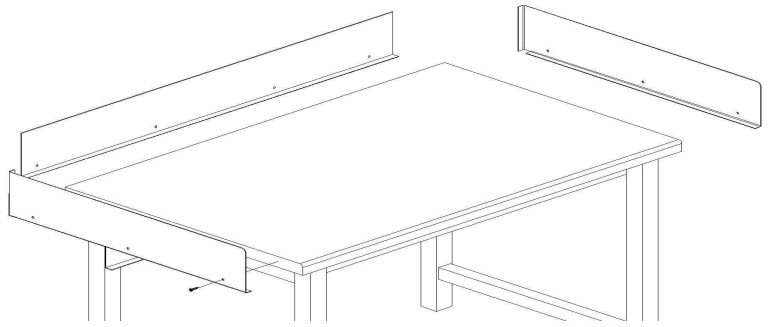
Invert worksurface onto soft, clean surface to avoid damage to laminate.

#### Step 4

Invert assembled frame onto the underside of the worksurface. Ensure stiffener is located at the rear of the worksurface. (Square edge). Center the frame on the worksurface. Fasten frame to the worksurface through the holes in the load beams and leg flanges using the #10 x 1" wood screws provided.

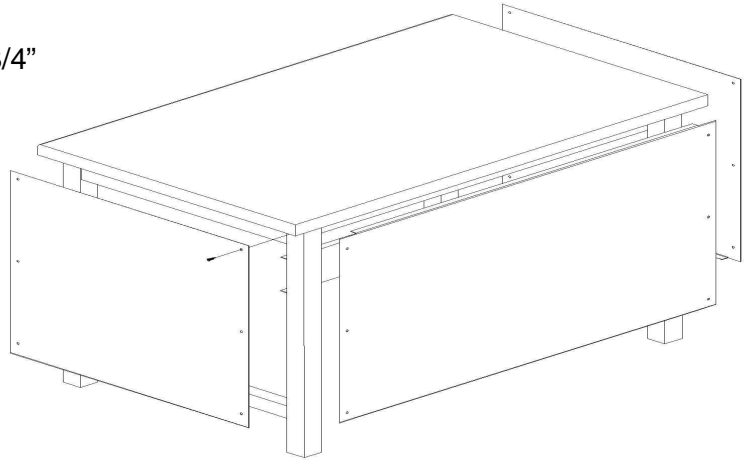
### Back & End Stops (Optional)

Back and end stops are pre-punched for easy installation. After worksurface has been mounted on frame, fasten stops to back and sides of worksurface with the #10 x 1" wood



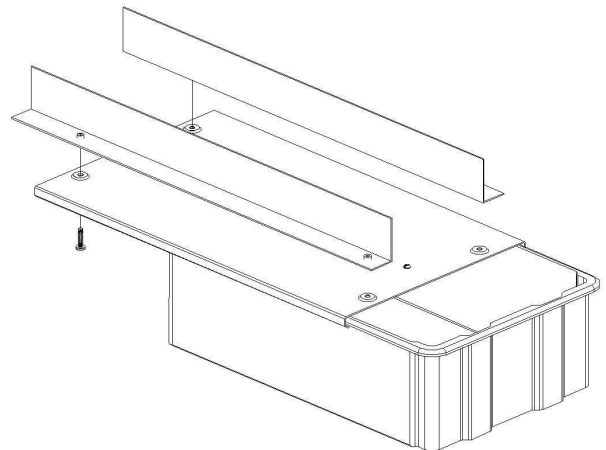
### Rear & end Modesty Panels (Optional)

Fasten all 3 panels to leg frame using the #8 x 3/4" self-drilling screws provided.



### Footrest (Optional)

Fasten footrest into crossbeam of leg assembly using the #10-32 Phillips machine screws provided.

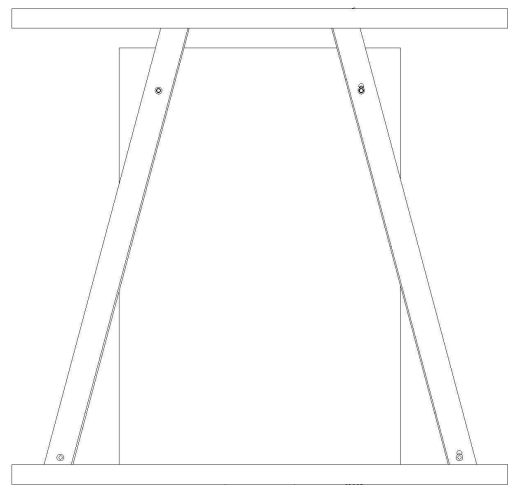


### Tote Box Installation (Optional)

Using 1/4"-20 x 1" machine screws loosely fasten "L" shaped hangers to the rear of the tote box hanger. Swing the front of the hangers away to form a "V". Lift tote box hanger into position. Set drawer hangers on rear load beam flange. Swing the front of the hangers back in, and rest them on the front load beam. Fasten the tote box hanger to the front of the hangers, slide into position along the length of the bench and tighten all hardware.

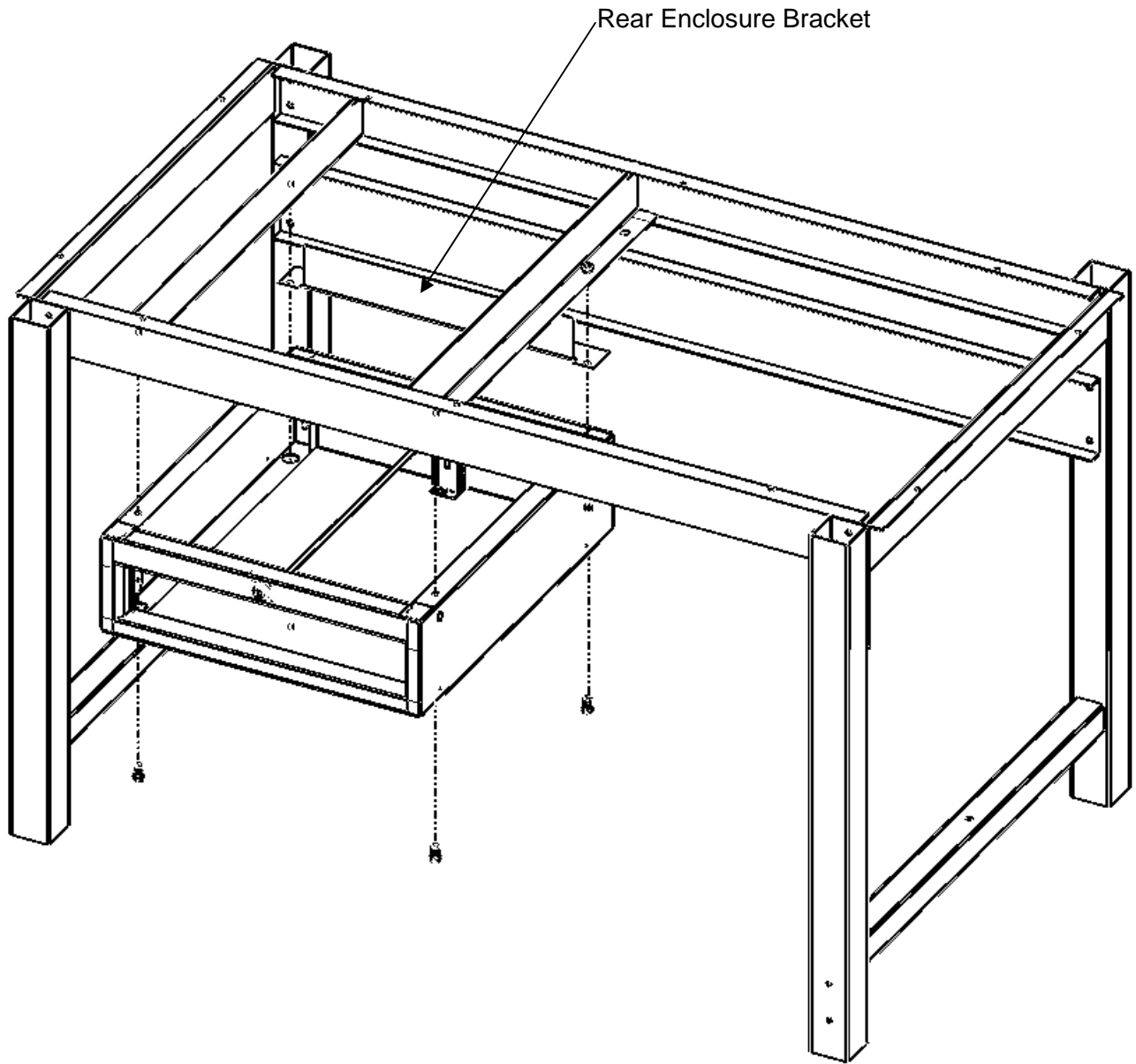
### L Shaped Hanger Installation

Hangers for 30" deep workbench are shown. Hangers for 36" deep workbench are approximately 6" longer, while the drawer mounts in the same position relative to the front of the bench.



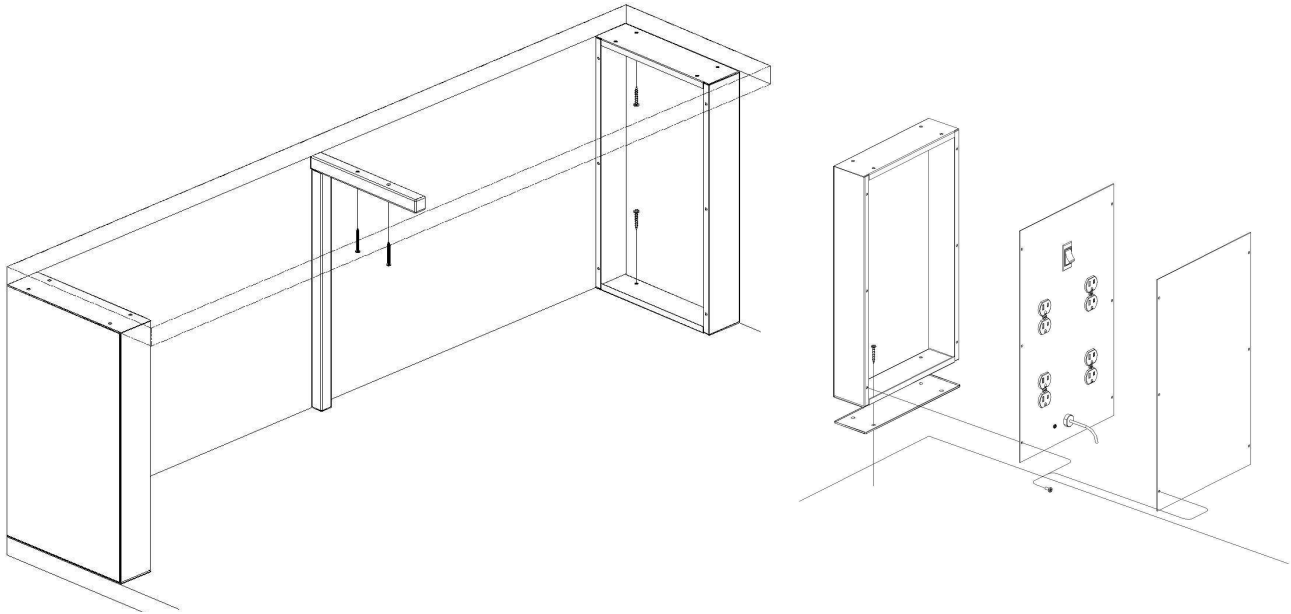
### **Hanging Cabinet Installation (Optional)**

For ease of assembly, first remove the drawers. Using the two of the 1/4"-20 x 1" hex head cap screws fasten the rear enclosure bracket and L brackets to the cabinet as shown. Then mount the assembly onto the rear load beam with the L bracket making a V as shown on the previous page. Swing the L brackets back in and installed the remaining 1/4"-20 x 1" hex head cap screws.



### Riser Shelf—Box Style (Optional)

Invert instrument shelf onto soft, clean surface to avoid damage to laminate. Place box supports flush with end and rear of riser shelf. Fasten with the #10 x 1" wood screws provided. For shelves 72" and longer also install the center support. Invert shelf and boxes. Place flush with end and rear of worksurface. Screw to worksurface with the #10 x 1" wood screws provided. **Note: On static dissipative worksurfaces place insulator between riser box and worksurface. Using box as a template, drill 5/16 diameter X 5/16" deep holes for insulator.** Install box support cover or optional electrical panels. \*\*\*Read Warning Box on Page 6.

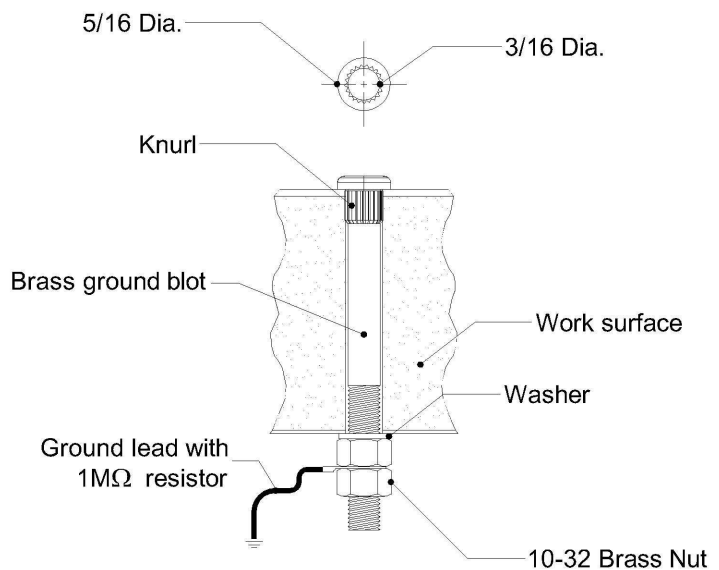


### Grounding Static Protected Worksurfaces

In order to prevent a possible electrical shock hazard to personnel, the static protected laminate should not be directly connected to ground at any point. Recommended grounding procedures suggest installing an in-line 1 MEG OHM current limiting resistor between the static protected laminate and the ground. Electrical (Hydro) grounding circuits may not be at actual ground potential. It is recommended that a separate ground circuit be installed for the static protected worksurface.

If your worksurface was not supplied with a factory drilled grounding location, use a 7/32" drill bit to drill into the worksurface in the desired location ensuring that no structure will obstruct the bolt. IT IS IMPORTANT TO USE THE CORRECT

SIZE DRILL BIT TO ENSURE PROPER CONTACT WITH THE CONDUCTIVE LAYER. Install the brass ground bolt. Lightly hammer the knurl into the worksurface until the bottom of the bolt head is flush with the laminate. Install washer, brass nut, ground lead, and brass nut as shown. Do not over tighten the nut, snug down firmly to ensure contact between the bolt and the laminate.



Document Number: AS70007

Print Date: June, 2013

This manual is proprietary information of Lista International Corporation. Unauthorized reproduction of any portion of this manual is prohibited without written consent of Lista International Corporation. The material in this manual is for informational purposes only. It is subject to change without notice. Lista International Corporation assumes no responsibility for any typographical errors contained in this manual.

©2013 by Lista International Corporation  
106 Lowland Street  
Holliston, MA 01746-2095

All rights reserved.

  
making workspace work®

**\*\*\*Warning!**

***Failure to comply with the proper installation of insulating grommets or gaskets may result in hazardous electrical conditions for personnel. The ultimate responsibility for personnel safety lies with the end user.***

**Lista International Corporation**

106 Lowland Street  
Holliston, MA 01746 USA  
Telephone: (800) 722-3020  
Fax: (508) 626-0353  
sales@listaintl.com  
www.listaintl.com