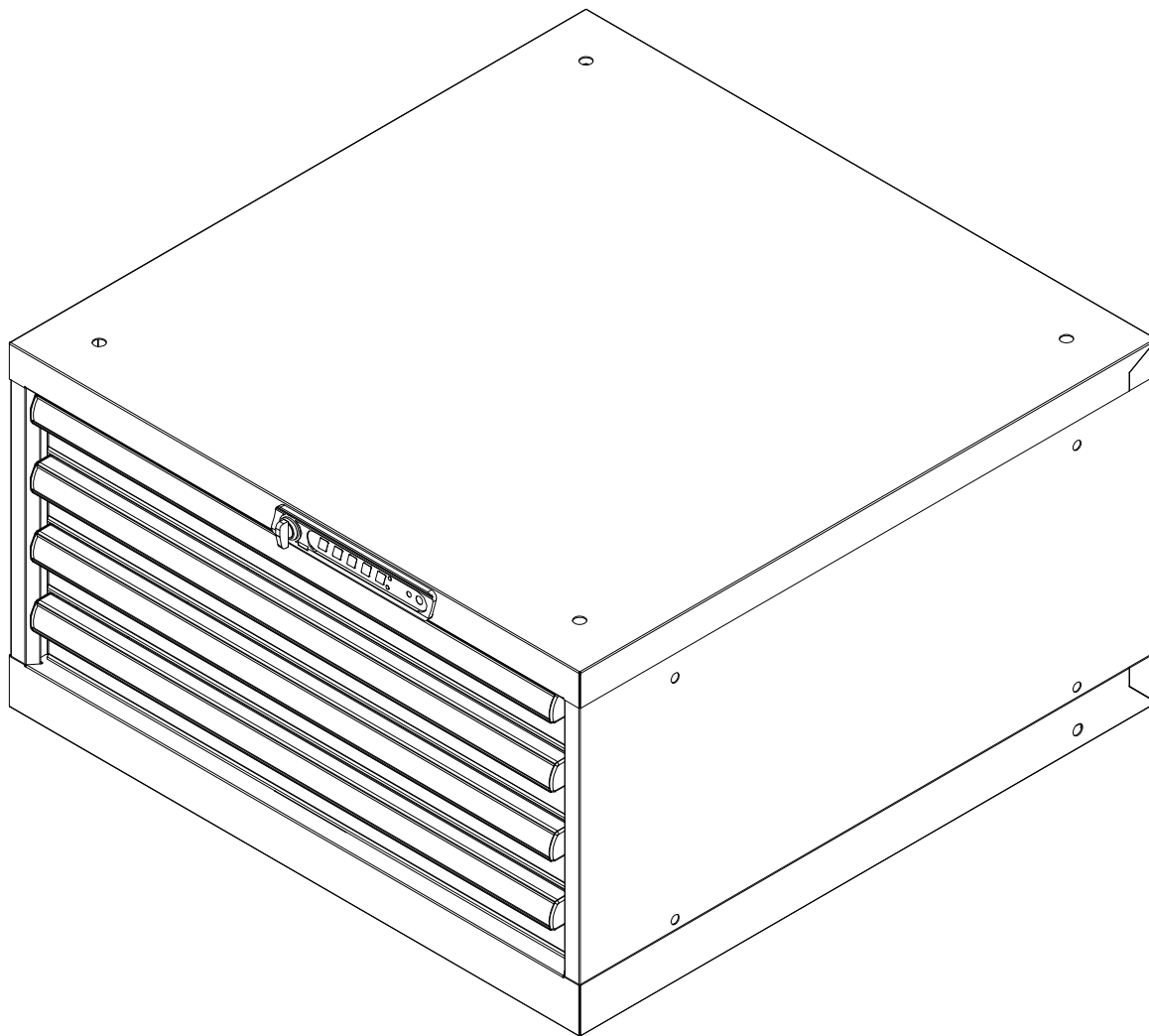


KEYPAD LOCK RETROFIT KIT



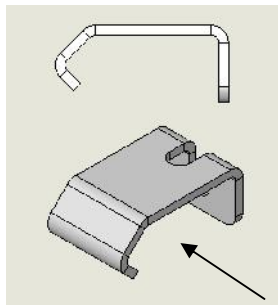
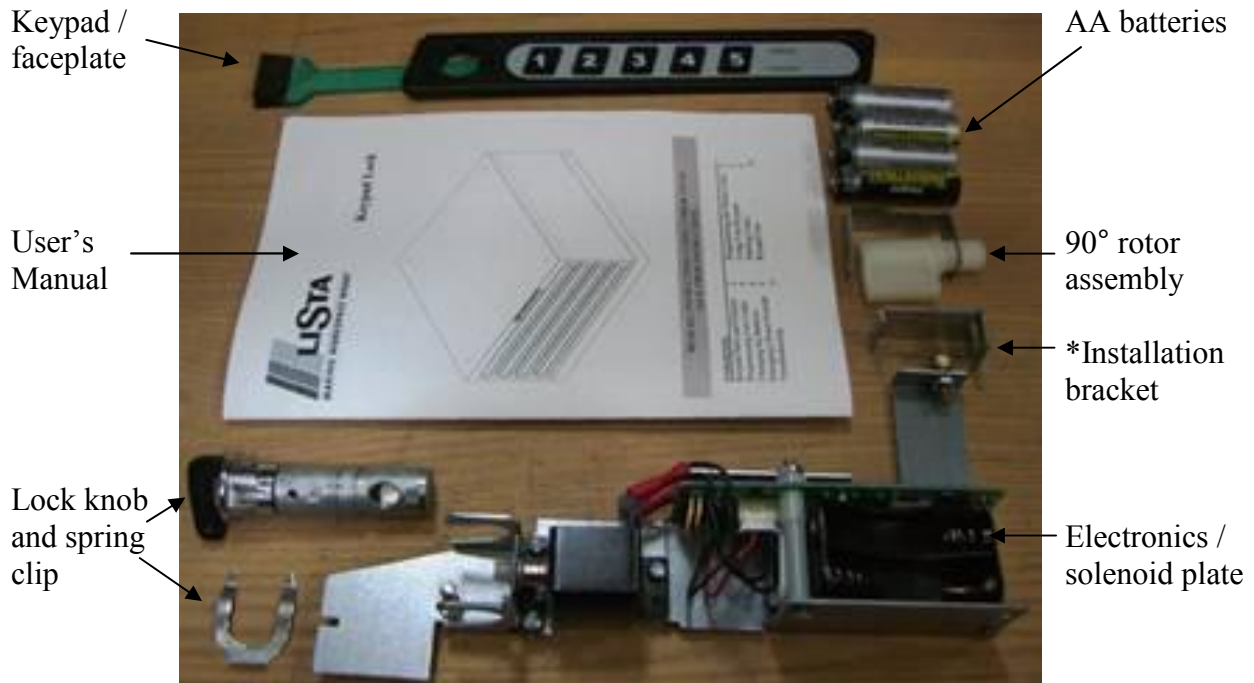
INSTRUCTIONS FOR ASSEMBLY

IMPORTANT READ & SAVE THESE INSTRUCTIONS

Tools Required for Assembly

- 5/32" hex (Allen) wrench
- #2 Phillips screwdriver
- Isopropyl alcohol or alcohol wipes
- Cloth for drying (lint free)

Retrofit Kit Components



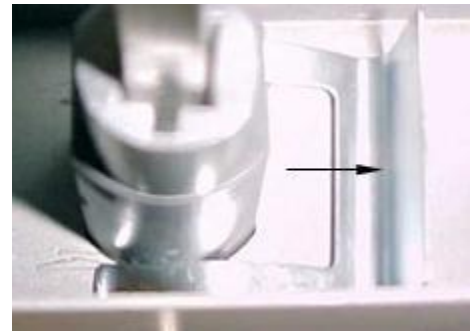
*Installation bracket for Medium Duty Cabinets, (substitute this bracket for straight bracket in all Medium Duty applications)

Installation Procedure

1. Remove enough drawers from the top of the cabinet for easy access. Follow the [Lista Drawer Suspension Installation & Removal Instructions](#) that are shipped with the cabinet.

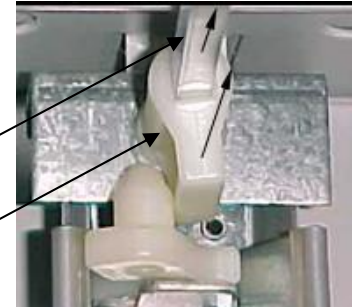


2. Remove the old lock from the cabinet. Use the screwdriver for leverage to pry the spring clip away from the lock and to protect your fingers from getting cut or pinched during the process.



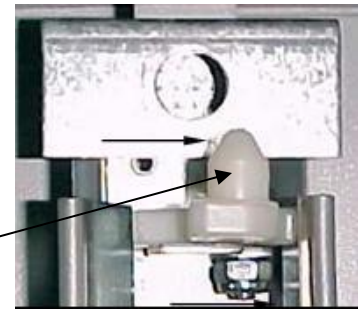
3. Remove the cam rod and rotor from the cabinet. Remove the rotor from the cam rod. You will reuse the cam rod.

Cam rod
Rotor



4. Check to make sure that the lock bar is in the locked position. If it is not, push the pivot as far towards the right (locked position) as it will go. This will ensure that the lock bar is “locked”.

Pivot



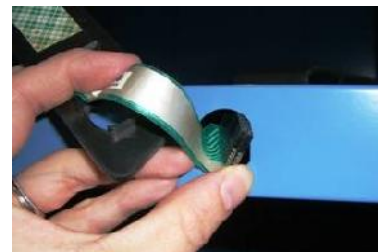
5. Place the 90° retrofit rotor assembly on the cam rod. Make sure that the orientation of the two parts is as shown and re-install this cam assembly into the cabinet as shown here. (Note: the angled cut in the metal bracket could be at the top instead)



6. Clean the front of the cabinet using a cloth with isopropyl alcohol (or an alcohol wipe) and dry the area completely.



7. Insert the keypad connector through the lock hole in the cabinet. To do this you will need to slightly roll the tail around the connector and insert it lengthwise through the hole.



8. Remove the protective film from the adhesive tape on the back of the keypad, align the keypad with the left edge of the lock hole and press firmly into place.



9. Remove the lock knob from the electronics / solenoid plate by loosening the screw as shown.



10. Install the lock knob into the hole and slide it over the cam rod. Make sure the green keypad tail is out of the way.



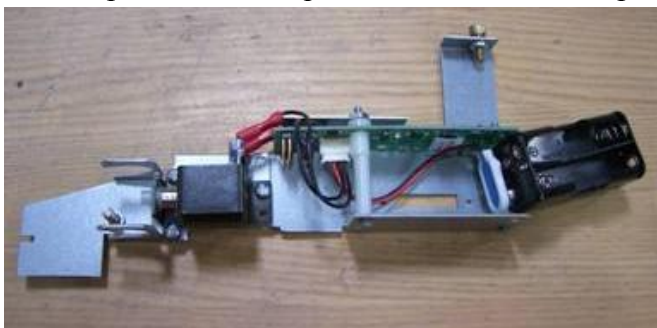
11. Use one hand to apply pressure to the lock knob from the front and reach into the cabinet with the other hand and secure the lock knob in place with the spring clip.



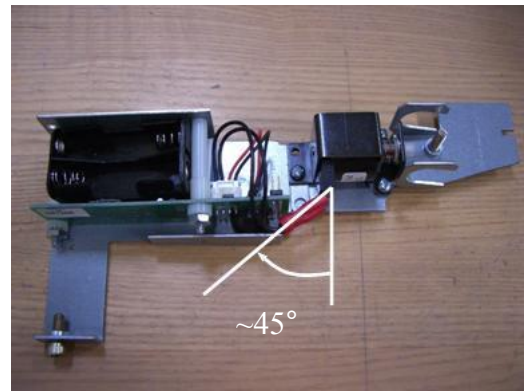
12. Turn the lock knob 90° clockwise, then 90° counter-clockwise to test the lock/unlock positions.



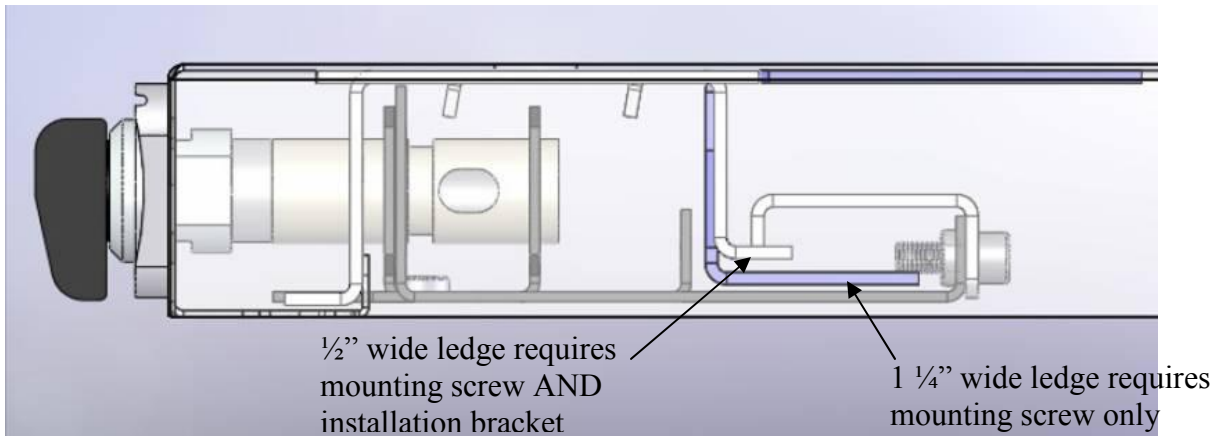
13. Remove the battery pack from the electronics / solenoid plate and install the four (4) AA batteries, making sure the polarity is correct. Replace the battery pack on the electronics / solenoid plate. It will require a little force to 'snap' it back into place.



14. If the wires coming out from the solenoid are sticking straight out, gently bend them back so that they are even with the rear lip of the electronics / solenoid plate (roughly 45°).



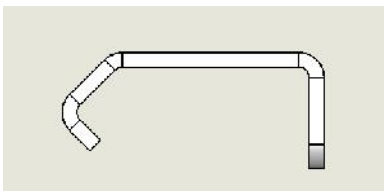
15. The installation bracket may or may not be required depending on the age / version of your cabinet. To determine whether or not the installation bracket is required, locate the rear ledge of the stiffener at the front of the cabinet. A quick measurement (or even feel) should tell you whether or not this ledge is roughly 1/2" wide versus roughly 1 1/4" wide. The installation bracket is only required if the ledge is the smaller of the two, 1/2" wide.



16. If the installation bracket is required, remove the rear mounting screw and place it through the elongated hole in the installation bracket. Re-thread the screw with the bracket onto the electronics / solenoid plate but leave it loose for installation into the cabinet (the 5/32" hex key might be needed to get the screw to start turning). *Medium Duty uses bent bracket (see below)



*Bracket for Medium Duty Cabinet



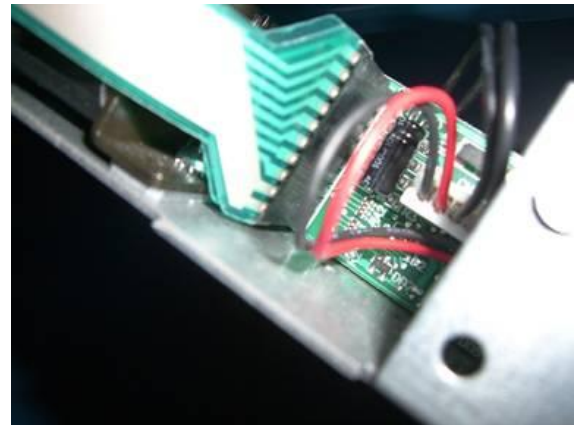
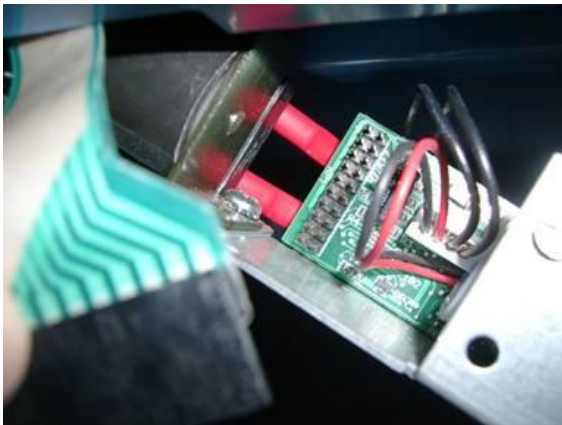
17. Hook the electronics / solenoid plate over the lock knob (already installed in the cabinet), aligning the screw with the groove in the lock knob.



18. Tighten the screw completely using the #2 Phillips head screwdriver.



19. Locate the black connector with the gold pins on the circuit board. Plug the keypad tail onto this – make sure the connectors are fully seated.



20. Try the 1-1-1-1-1 user code. It should work at this point – the LEDs will light up one at a time, from left to right, and then strobe to indicate that the code is correct. The light for #1 will stay on while the lock is activated.



21. Make sure the rear mounting screw and installation bracket (if necessary) are loose enough to clear the ledge in the cabinet (the 5/32" hex key might be needed to get the screw to start turning). Rotate the electronics plate up into the top of the cabinet.



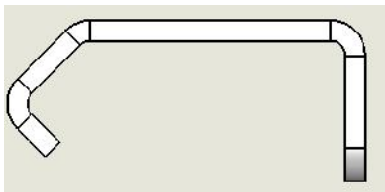
22. For cabinets with the 1 ¼” ledge, tighten the rear screw over the ledge in the cabinet to secure the keypad lock in place. Use the 5/32” hex key to ensure that the screw is snug.



23. For cabinets with the ½” ledge, hook the installation bracket over the ledge.



24. Hold the electronics / solenoid plate and installation bracket in place and tighten up the rear mounting screw. The installation bracket and the electronics / solenoid plate should be pinched together completely right at the screw. Use the 5/32” hex key to ensure that the screw is snug.



Installation bracket For Medium Duty Cabinet



25. Test the lock/unlock function a few times using the dummy code 1-1-1-1-1. You may need to adjust the position of the electronics / solenoid plate slightly (front-to-back or side-to-side) to get the lock to operate optimally.



26. Make sure the lock knob is in the unlocked (horizontal) position.

27. Replace the drawers in the cabinet. Follow the [Lista Drawer Suspension Installation & Removal Instructions](#) that are shipped with the cabinet.

28. Refer to your [Keypad Lock User's Manual](#) on how to program and use the keypad.

Making Workspace Work ® is a trade mark of Lista International Corporation

Revision Date: 3/14/2013
Document Number: MD036A3 Rev. 4

This document is proprietary information of Lista International Corporation. Unauthorized reproduction of any portion of this document is prohibited without written consent of Lista International Corporation. The material in this document is for informational purposes only. It is subject to change without notice.

© 2008 Lista International Corporation
106 Lowland Street
Holliston, MA 01746-2094
E-mail: sales@listaintl.com

All rights reserved

For questions or technical support call **1-800-722-3020**

