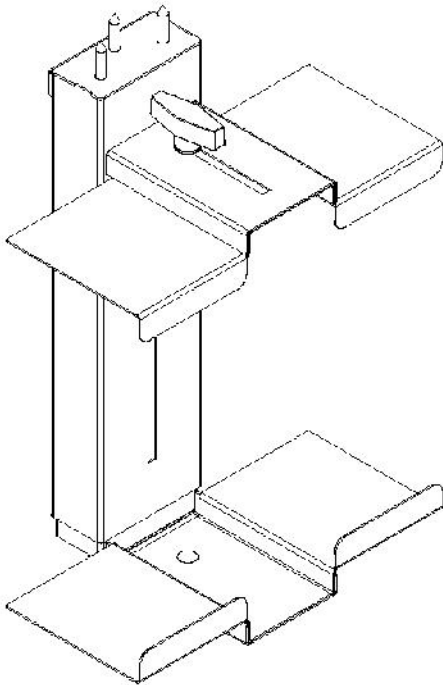


Adjustable CPU Holder Assembly Instructions

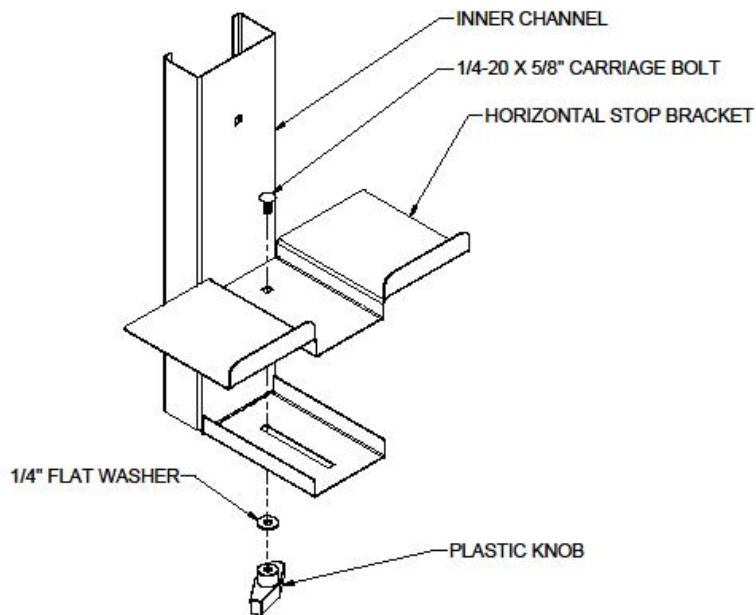
Parts included:

- For Attaching to Top
 - Inner Channel
 - Outer Channel
 - Horizontal Stop Bracket
 - Plastic Knob
 - ¼-20 x 5/8" Carriage Bolt
 - ¼" Flat Washer
 - 5/16 x 1 ¼" Hex Head Bolt
- For Attaching to Nexus Upright
 - Inner Channel
 - Outer Channel
 - Horizontal Stop Bracket
 - Plastic Knob
 - ¼-20 x 5/8" Carriage Bolt
 - ¼" Flat Washer
 - 5/16 x 1 ¼" Hex Head Bolt
 - CPU Holder Mounting Bracket
 - Wire Locking Clip
 - ¼-20 x 5/8" Hex Head Bolt



Please read through these instructions before assembling as some steps are performed in a different order depending on how the CPU Holder Assembly is to be mounted.

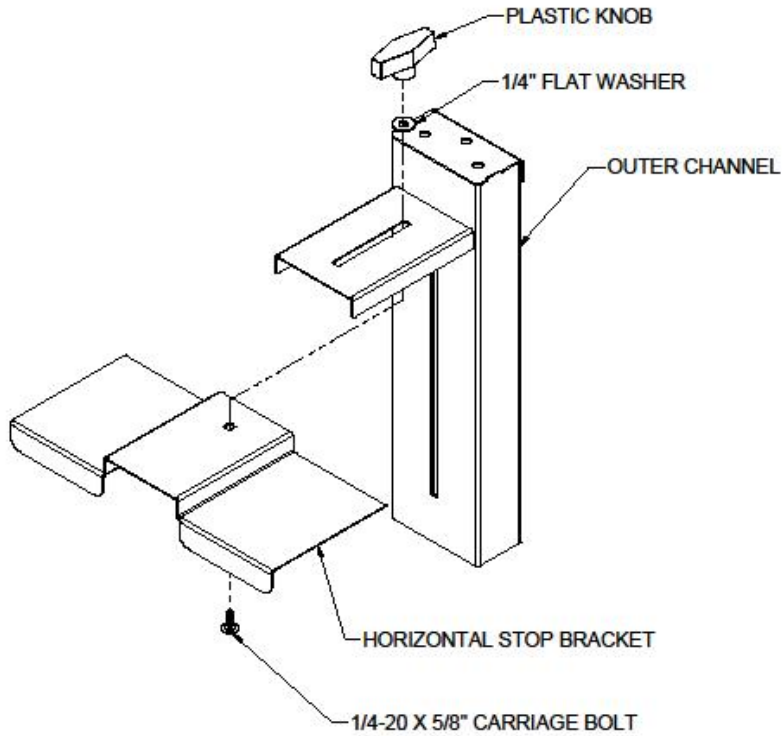
Inner Channel Assembly



Inner Channel Assembly:

- Orient Horizontal Stop Bracket as shown
- Insert 1/4-20 x 5/8" Carriage Bolt through square hole in Stop Bracket and rectangular slot in Inner Channel
- Insert 1/4" Flat Washer onto Carriage Bolt
- Thread Plastic Knob onto Carriage Bolt

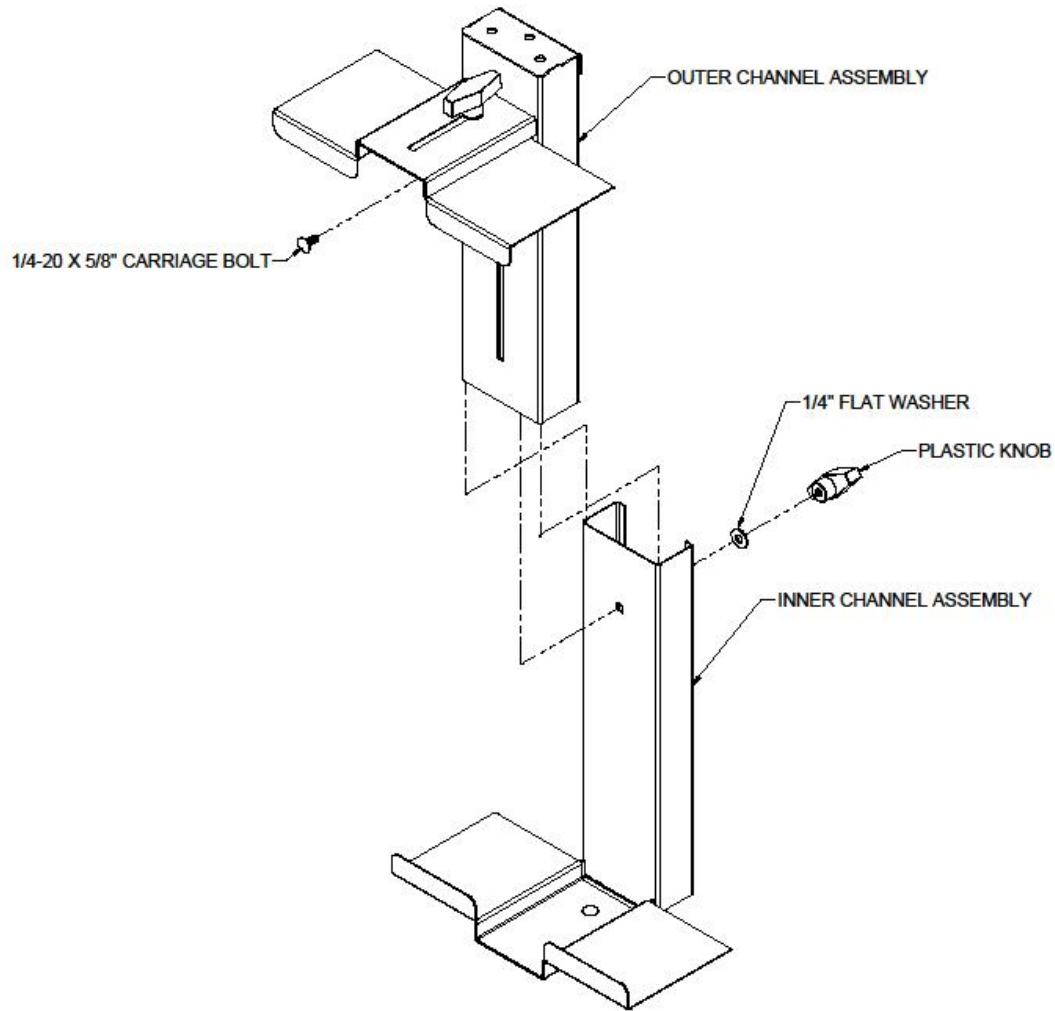
Outer Channel Assembly



Outer Channel Assembly:

- Orient Horizontal Stop Bracket as shown
- Insert 1/4-20 x 5/8" Carriage Bolt through square hole in Stop Bracket and rectangular slot in Outer Channel
- Insert 1/4" Flat Washer onto Carriage Bolt
- Thread Plastic Knob onto Carriage Bolt

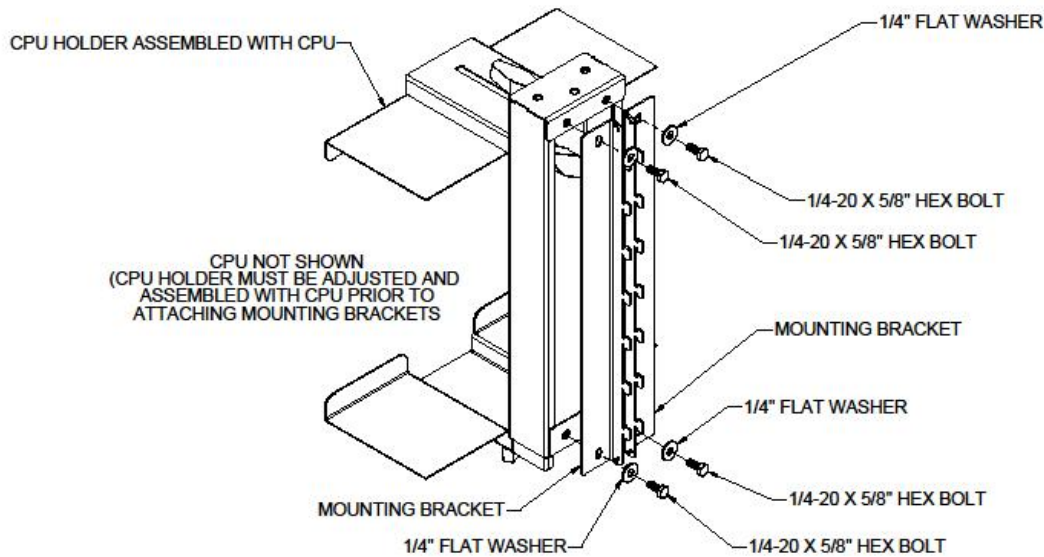
Assembling Inner and Outer Channel



Inner and Outer Channel Assembly:

- Orient Inner and Outer Channel as shown
- Slide Inner Channel into Outer Channel (square hole and rectangular slot should line up)
- Insert 1/4-20 x 5/8" Carriage Bolt through square slot in Outer Channel and square hole in Inner Channel
- Insert 1/4" Flat Washer onto Carriage Bolt
- Thread Plastic Knob onto Carriage Bolt

Attaching Mounting Brackets

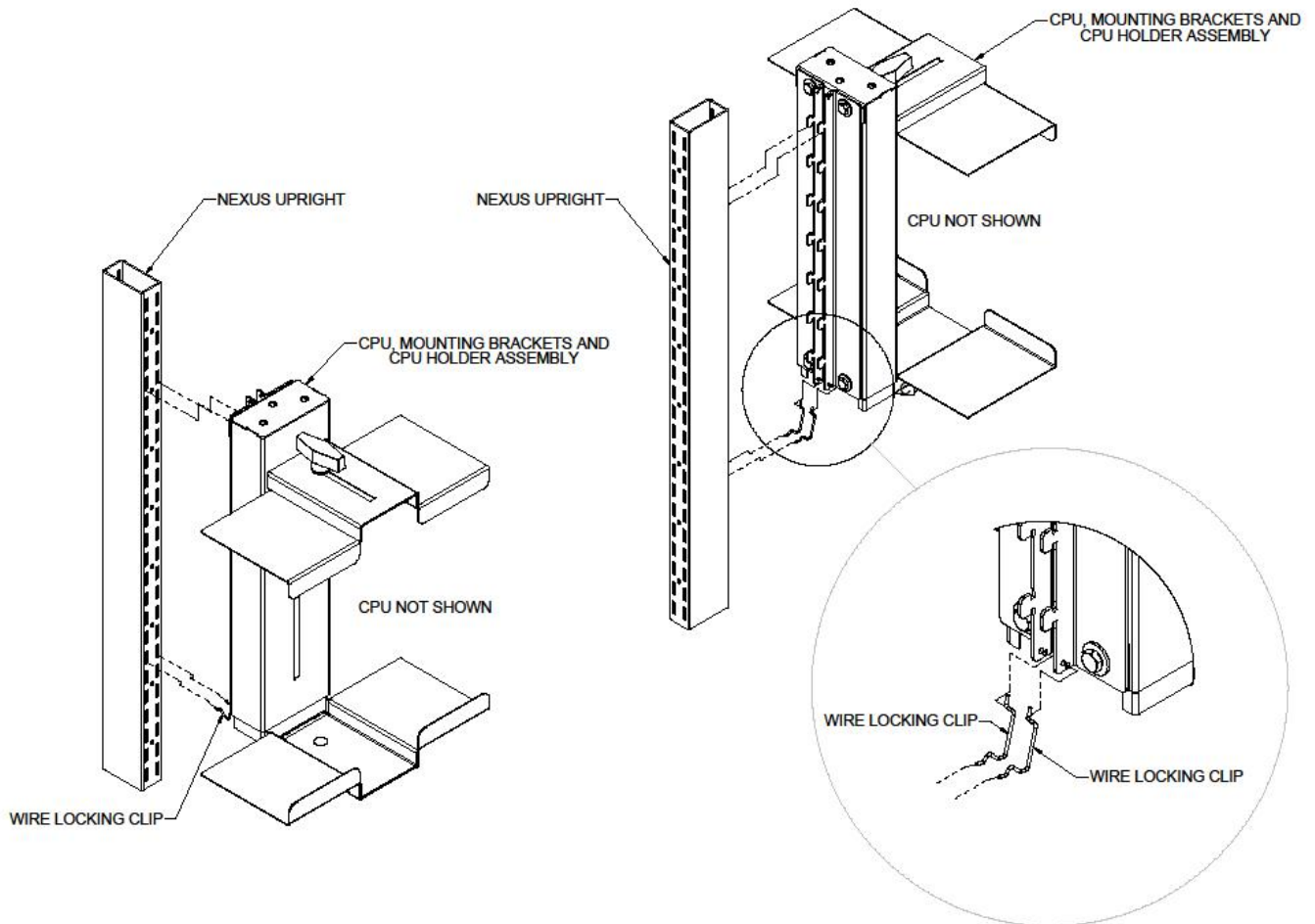


Note: Inner and Outer Channels must be assembled and adjusted to the CPU prior to attaching Mounting Brackets

Outer Channel Assembly:

- Orient Mounting Brackets as shown
- Insert 1/4-20 x 5/8" Hex Bolt through 1/4" Flat Washer
- Insert 1/4-20 x 5/8" Hex Bolt with 1/4" Flat Washer through holes in Mounting Bracket and thread into CPU Holder Assembly
- Repeat at other end of Bracket and again to attach remaining Bracket

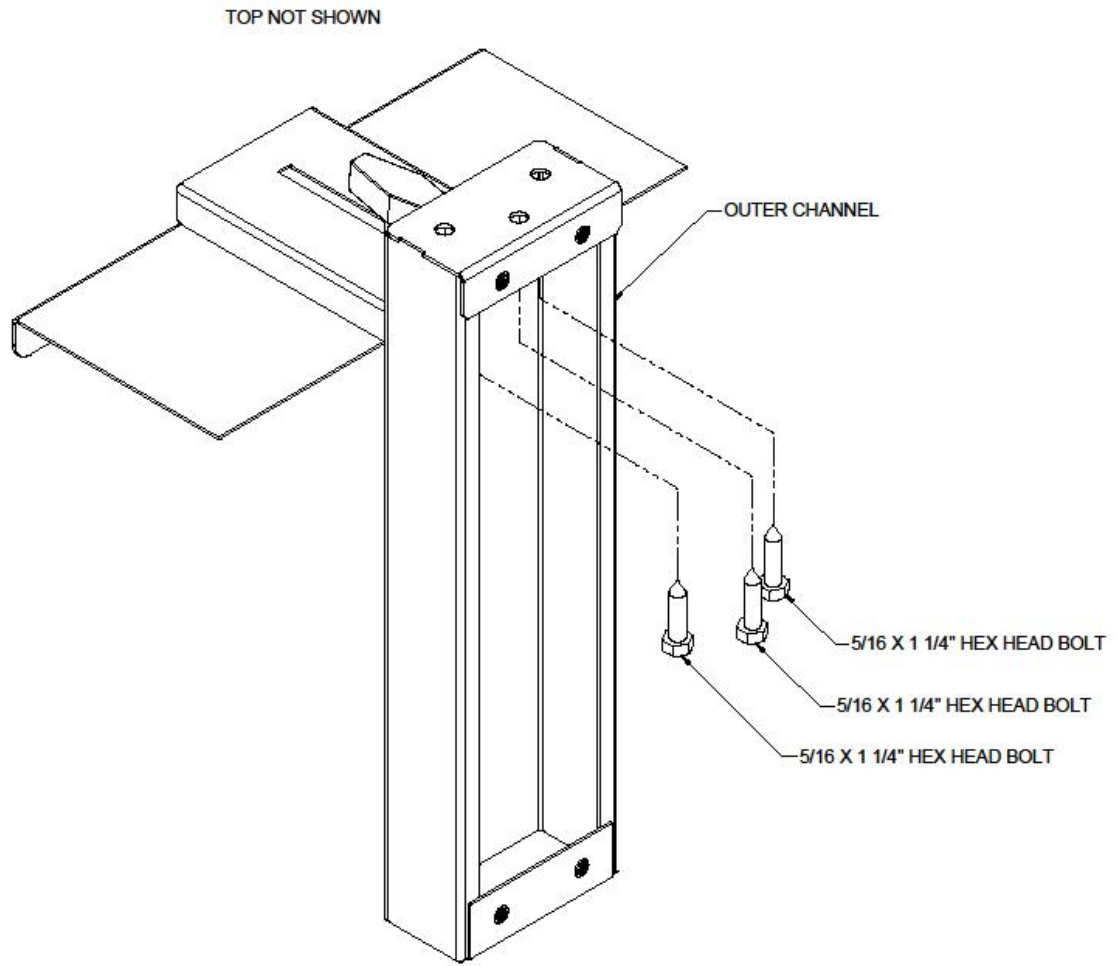
Attaching to Upright



Attaching CPU Holder Assembly to Upright:

- Insert tabs in Mounting Brackets through slots in Upright
- Brackets should “fall” into slots once they are fully inserted. If not, pull down on CPU Holder Assembly to engage tabs into Upright.
- Orient Wire Locking Clip as shown (in detail view), rotate the Clip to horizontal (to the right) and insert straight section through lower hole (closest to CPU holder) in Mounting Bracket and rotate Clip back to vertical.
- Snap lower section of Clip into Slot (below) in Upright (it should line up with a slot, if the Clip will not snap into a slot, use the upper hole, further away from CPU Holder, in the Mounting Bracket)

Attaching to Top



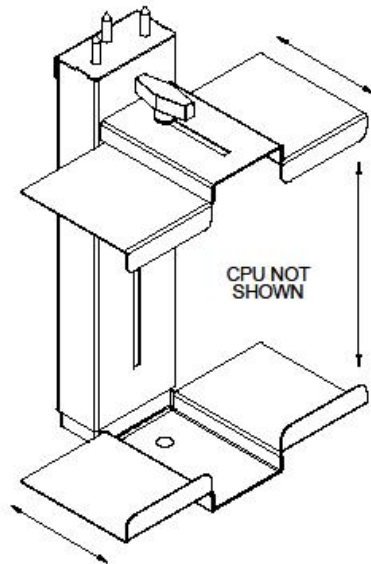
Attaching CPU Holder Assembly to Upright:

It is easier to attach the Outer Channel Assembly to the Top before it is assembled with Inner Channel Assembly

- Locate Outer Channel Assembly in desired location under Top (work surface) and mark holes for drilling.
- Using 1/8" drill bit, drill approx. 1 1/4" deep hole in marked locations (use caution to not drill all the way through the Top)
- Position Outer Channel Assembly so holes in Outer Channel Assembly are in line with holes in Top and thread in the 5/16 x 1 1/4" Hex Head Bolts

Assembling CPU to CPU Holder

- With the Inner and Outer Channels Assembled, loosen all Plastic Knobs and slide the CPU Holder Assembly all the way open.
- Locate CPU on top of Horizontal Stop Bracket attached to the Inner Channel Assembly
- Adjust the Assembly to fit snugly around the CPU
- Tighten all Plastic Knobs on CPU Holder Assembly.



Making Workspace Work™ is a trademark of Lista International Corporation.

Document Number: MD0077A3 Rev. 1

Print Date: August 2011

This manual is proprietary information of Lista International Corporation. Unauthorized reproduction of any portion of this manual is prohibited without the written consent of Lista International Corporation. The material in this manual is for informational purposes only. It is subject to change without notice.

© 2007 by Lista International Corporation
106 Lowland Street
Holliston, Ma. 01746-2094
All rights reserved

